



OFFSHORE

LAND RIG

**Gates Black Gold®
Rotary Vibrator/Drilling Hose
7,500 psi W.P. - 15,000 psi Test Grade E
18,750 Minimum Burst**

Certification/Standards

API Spec 7K
ISO 14693
ABS/CDA Type Approval
DNV Type Approval: NV D-3352
Test Certificates (Included)
Coupling/Material Traceability (Available)
3rd Party Witness Test (Additional Cost)

(Provided by Gates Internally Certified Fabricators – Refer to page 47 for a listing)

Nom. I.D.	Nom. O.D.	Min. Bend Radius (In.)	Wt. Per Ft.	Swage Cplg. Wts. Ea. (Lbs.)	Max. Lgth. of Hose (Ft.)	Safety Clamp & Chain Part No.	Spec.
2-1/2	5.16	48	20.2	62	90	7361-0835	4773PE
3	5.66	48	22.6	70	90	7361-0840	4773PE
3-1/2	6.04	54	24.1	75	90	7361-0845	4773PE
4	6.48	60	25.8	90	90	7361-0850	4773PE

RECOMMENDED FOR: Flexible connection between standpipe and swivel (Rotary Drilling) or between pump and standpipe (Rotary Vibrator) for pumping mud at extra high pressure in oil drilling and exploration work. Meets the high demands of directional drilling and down linking with negative pressure pulses and elevated temperatures.

TEMPERATURE: -4°F to +180°F (-20°C to +82°C).

TUBE: Type C₃ (Modified Nitrile). 3/16" thick. Black. Specially compounded for handling abrasive, corrosive and oily drilling mud.

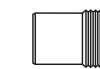
REINFORCEMENT: Multiple layers of polyester cord over tube. Multiple layers of "close wound", high tensile plated steel cables with one layer of adhesion fabric placed between cable layers. Multiple layers of reinforcement under cover.

COVER: Type C₄ (Modified Nitrile). Black. Specially compounded UltraBration cover is resistant to abrasion, corrosion, cutting, gouging, oil and weather. One continuous longitudinal yellow transfer label (with serial number and code date embossed).

COUPLINGS: Swaged – API 7K hose assemblies with working pressures exceeding 5,000 psi, the end fitting will be butt-welded onto the hose coupling. Couplings can be supplied with your choice of end fitting (see "Most Commonly used Welded-On Fittings" section for more detailed information).

NOTE: FIELD WELDING OF FITTINGS TO COUPLING IS **NOT** RECOMMENDED.

FITTINGS: Hammer Unions



Female Sub

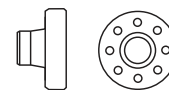


Male Sub./Nut

Hubs



Flanges



OPTIONAL: Accessories such as SAFETY CLAMPS, HOSE LIFT EYE & COLLAR CLAMP and STAINLESS STEEL ARMOR are found on page 55.